

LUNA 2™
LUNA FLEUR 2™

by Gabriel



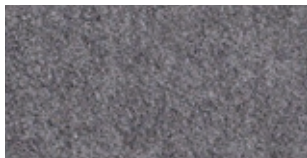
2393 · 4013



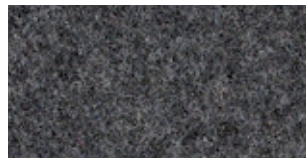
2493 · 24013



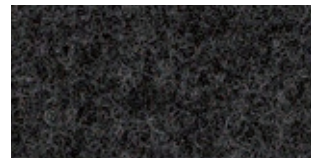
2393 · 4009



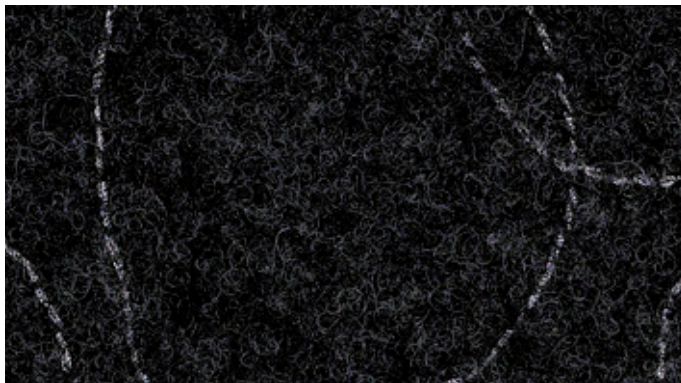
2393 · 4010



2393 · 4012



2393 · 4011



2493 · 4011



2393 · 4704



2393 · 4605



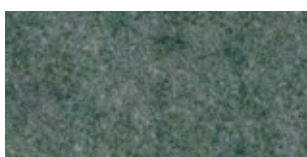
2393 · 4601



2493 · 24703



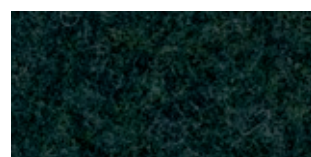
2393 · 4608



2393 · 4812



2393 · 4703



2393 · 4811



2493 · 24006



2393 · 4006



2393 · 4411



2393 · 4502



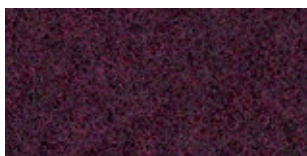
2393 · 4406



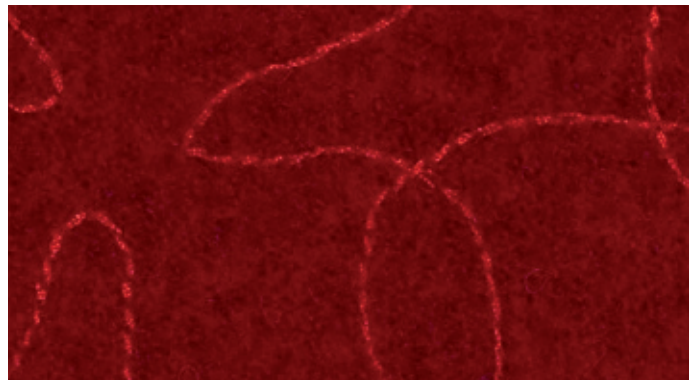
2393 · 4413



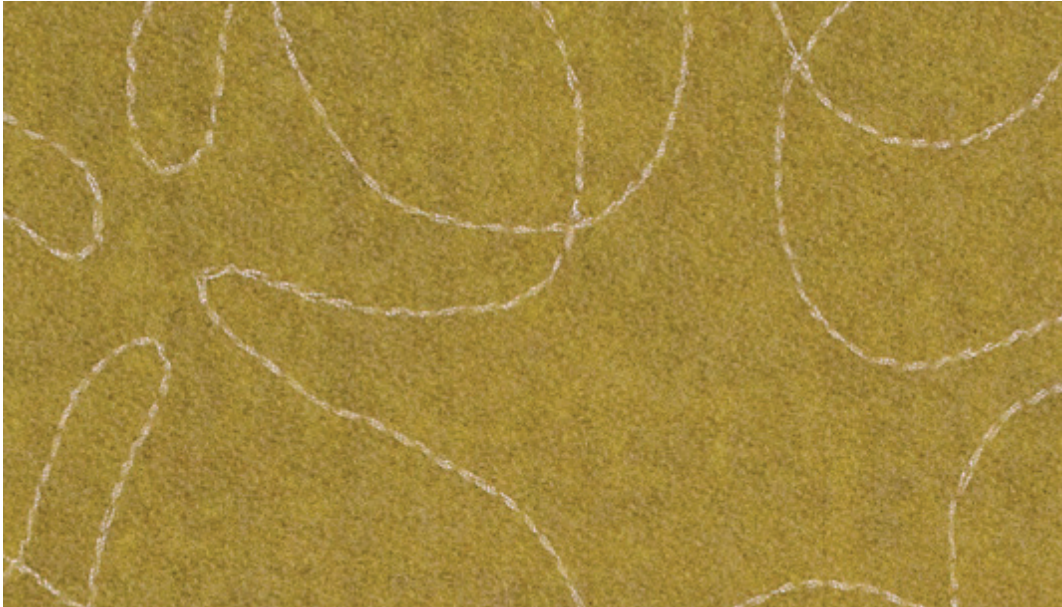
2393 · 4412



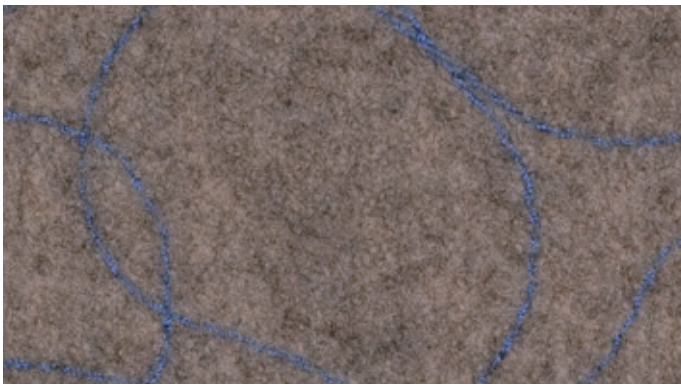
2393 · 4401



2493 · 24413



2493 · 24204



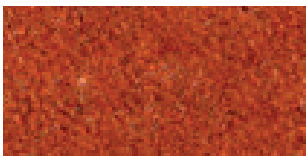
2493 · 24101



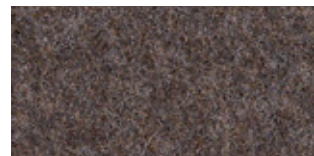
2393 · 4204



2393 · 4101



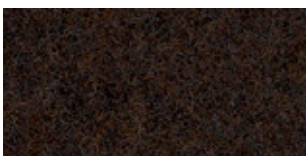
2393 · 4301



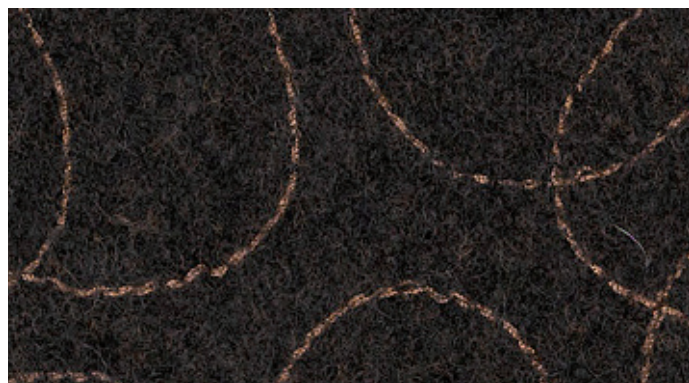
2393 · 4102



2393 · 4111



2393 · 4104



2493 · 4104

LUNA 2™

LUNA FLEUR 2™

| | | |
|----------------------------|--|-----------------|
| Design no. | 2393/10432493 | |
| Fields of application | Contract quality · soft seating | |
| Material | wool · polyamide | 90% · 10% |
| Weight | 680 gr/lm · (1.5 lbs/ly) · 800 gr/lm · (1.76 lbs/ly) | |
| Width | 140 cm · (55") · 145 cm · (57") | |
| Abrasion resistance | rubs · EN ISO 12947-2 (Martindale) | 70,000 · 50,000 |
| Pilling | scale 1-5, max. 5 · EN ISO 12945-2 | 3-4 |
| Colour fastness to light | scale 1-8, max. 8 · EN ISO 105 - B02 | 5-7 |
| Colour fastness to rubbing | scale 1-5, max. 5 · EN ISO 105x12 (wet/dry) | 4-5 |
| Cleaning | dry cleaning | P(S) |
| Flammability | EN 1021 1&2 · BS 5852 P1 0&1 · Calif. Bull.117, E Will also pass other flammability standards. Flame retardant performance is dependent upon the foam used and fireproof treatment. | |
| | ☀ AATCC 16 Lightfastnesspass | pass |
| | ☉ AATCC 8 or 116 wet/dry crocking | pass |
| | 🔥 California Bulletin CAL 117-E Class 1 | pass |
| | 📐 ASTM D4966-02 Martindale Abrasion | pass |
| | ★ ASTM D3511 Pilling | pass |
| Design/Colours | Anne Lasthein / Dorthe Helm | |

Subject to changes and colour differences

